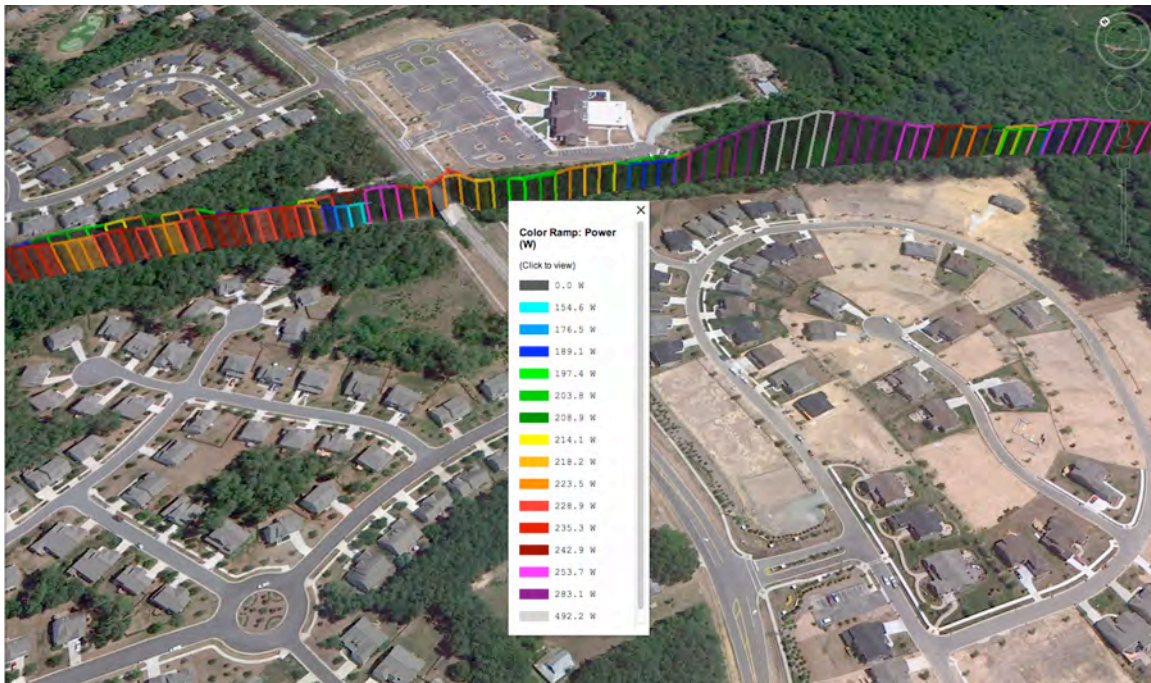


# Newton Tracker™

## GPS data for your iBike® Newton

### July 2013



## **Introduction**

Newton Tracker adds GPS data to your iBike Newton rides, using your iPhone or Android smartphone!

GPS data from your smartphone is uploaded to your cloud-based Newton Tracker account. When you download your Newton ride, Isaac software finds and automatically merges your GPS data with your Newton data.

You can view your GPS data using Google Earth, or you can export your Newton file so that it can be used in Strava, TrainingPeaks, and other applications.

## **Instructions Summary**

### **ONE-TIME SETUP**

- Update your Newton firmware and Isaac software
- Install the free “Newton Tracker” app on your iPhone or Android smartphone
- Purchase a Newton Tracker key for your Newton from the iBike Store
- Install the key on your Newton
- Create a free Newton Tracker account using Isaac software
- On your smartphone, log in to your Newton Tracker account
- Install Google Earth on your computer

### **USING NEWTON TRACKER**

- Run the Newton Tracker app during your bike rides
- Download your Newton ride files as usual. Your GPS data will be automatically added to your ride file
- View your GPS route in Google Earth, or export your ride file to Strava or your favorite application

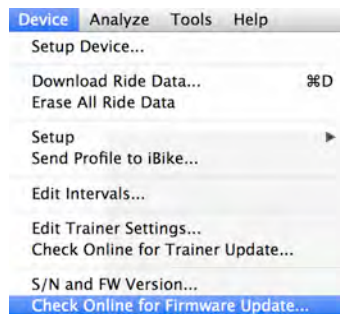
## SETUP

### 1) UPDATE YOUR NEWTON FIRMWARE AND ISAAC SOFTWARE

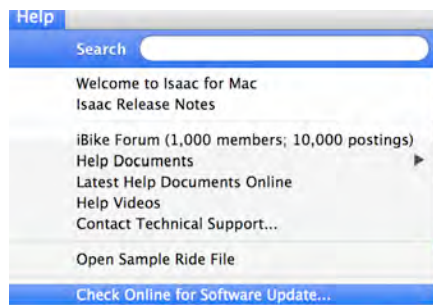
Start Isaac, then check your Newton firmware and Isaac software.

***To use Newton Tracker functionality, you must have firmware FW 4.07 or higher installed, and Isaac software 2.2.0 or higher installed.***

***Firmware:*** check and update your firmware, using the “Device/Check Online for Firmware Update...” command:



***Software:*** check and update your software, using the “Device/Check Online for Software Update...” command:



### 2) INSTALL THE NEWTON TRACKER APP

#### ***iPhone***

In the App Store, search for “ibike”, or “Newton Tracker”. Install the Newton Tracker app

#### ***Android***

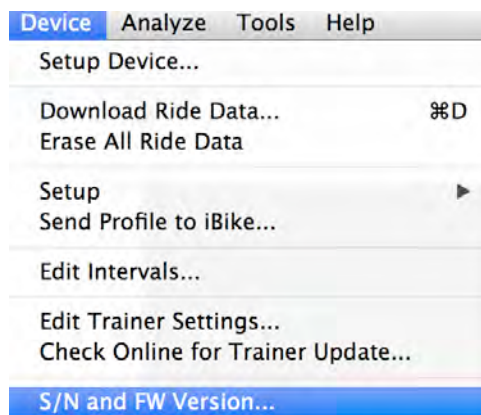
***As of July 30 2013 the Android version of Newton Tracker is in beta form. These Instructions will be updated as soon as Newton Tracker for Android is released.***

### 3) PURCHASE A NEWTON TRACKER KEY

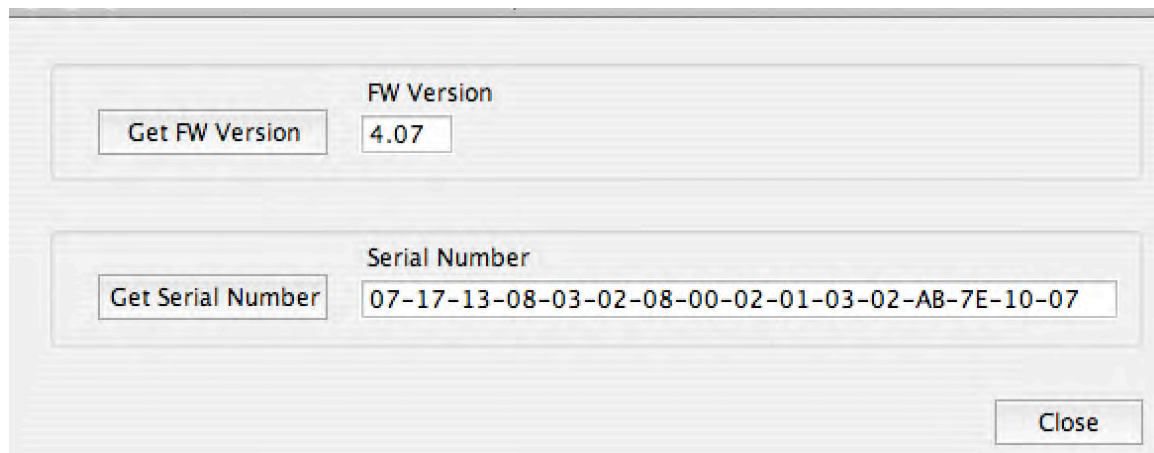
A firmware key is required to enable GPS tracking. The key is available at the iBike Store.

*Once you purchase your key you will receive an email from Velocomp requesting the serial number of your Newton.*

Your serial number is stored in the memory of your Newton. Attach your Newton to your computer, start Isaac, and get your serial number with Isaac software through Device: S/N and FW version:



Your serial number will appear:



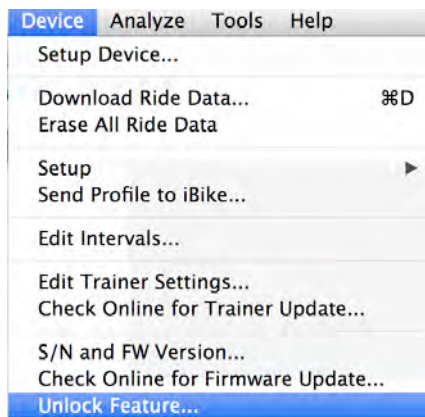
Copy and paste your serial number into an email, then send your serial number to the Velocomp email address.

#### 4) INSTALL YOUR NEWTON TRACKER KEY

You will receive an email from Velocomp with your Newton Tracker key as an attachment.

*We recommend you move the key to your computer's desktop.*

Attach your Newton to your computer and start Isaac. Use the command Device/Unlock Feature... to install your Tracker key:

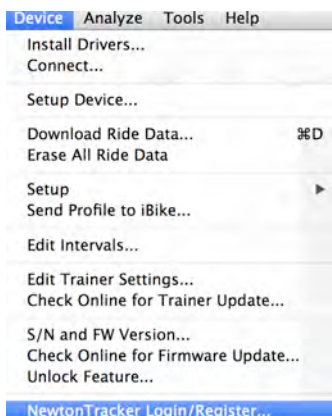


Follow Isaac prompts to locate and install the key. Once installed, the key will remain permanently in your Newton.

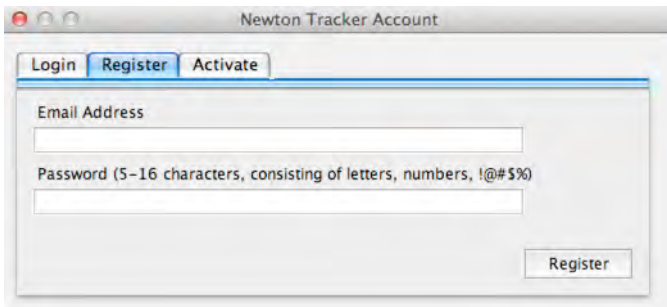
#### 5) CREATE AND REGISTER YOUR NEWTON TRACKER ACCOUNT IN ISAAC

Immediately after you install your key, a pop-up menu should appear that provides you prompts to create a Newton Tracker account.

If the prompts don't appear, or if you choose to create your account at a later time, use the command "Device/Newton Tracker Login/Register..."



Click on the Register tab:

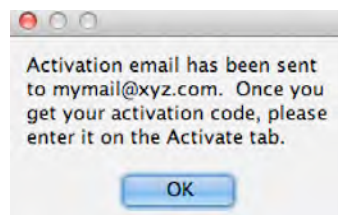


The screenshot shows a web browser window titled "Newton Tracker Account". At the top, there are three tabs: "Login", "Register", and "Activate". The "Register" tab is selected. Below the tabs, there are two input fields: "Email Address" and "Password (5-16 characters, consisting of letters, numbers, !@#\$%)". A "Register" button is located at the bottom right of the form.

Enter your email address and password for your account

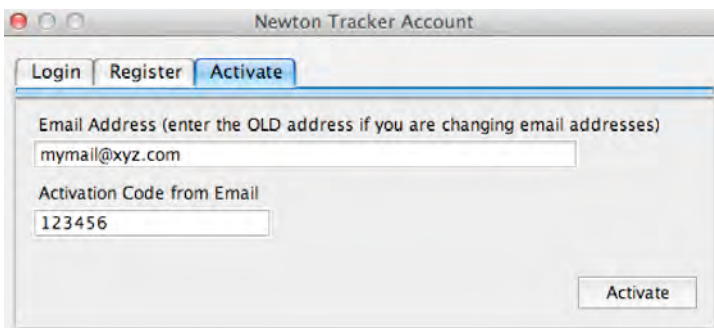
Click the Register button

An activation email will be sent to the email address you specify:



Click OK

An activation code will be sent to your email address. After you receive the email select the Activation tab, then enter the code (123456 in this example).

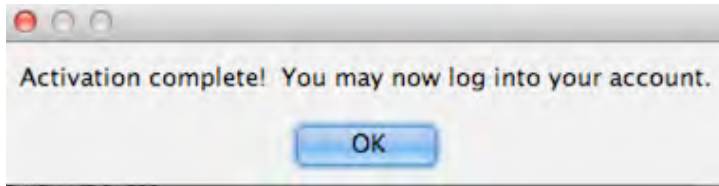


The screenshot shows the same "Newton Tracker Account" web browser window, but now the "Activate" tab is selected. The "Email Address" field contains "mymail@xyz.com" and is labeled "Email Address (enter the OLD address if you are changing email addresses)". The "Activation Code from Email" field contains "123456". An "Activate" button is located at the bottom right.

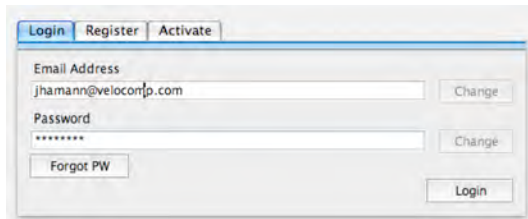
Click the Activate button in the lower right corner.

After a few moments Isaac will provide you an acknowledgment:

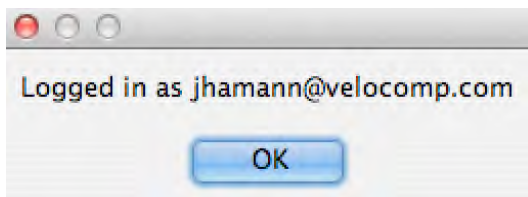




Finally, click the Login tab and enter your email address and password. Then, click the Login button in the lower right.



You'll get login confirmation. ***You won't have to login again...***



***Your Newton Tracker account is now set up and Isaac will automatically find Tracker data that corresponds to your ride data.***

## **6) LOG IN TO YOUR TRACKER ACCOUNT ON YOUR NEWTON TRACKER APP**

- Launch the Newton Tracker app on your smartphone
- Tap the "Settings" button
- Tap "Connection Information". Enter the email address and password you used for Isaac login
- Tap "Done". You'll get a checkmark confirmation that you've been logged into Isaac and that email and password are verified.
- Click the Done button to return to main screen.

***You won't have to repeat the app login steps again.***



## **7) INSTALL GOOGLE EARTH ON YOUR COMPUTER**

1) Tracker displays its GPS information through Google Earth software, available for free here: [www.google.com/earth/download-earth.html](http://www.google.com/earth/download-earth.html)

2) Install Google Earth on your computer

Once you've completed these one-time setup steps, you're ready to use the Tracker app

**ONE TIME SETUP IS COMPLETE. YOU ARE NOW READY TO USE  
NEWTON TRACKER!**

## USING THE NEWTON TRACKER APP

- Launch the Newton Tracker app. If on the opening screen, tap “Get Started” button to get to the Start Ride screen
- At the start of the ride, tap the “Start Ride” button
- The Tracker app will record your GPS information. After a few seconds the smartphone will go to sleep, to save power; however, Newton Tracker will continue to run in the background
- At the end of the ride, Tap the “Done” button. Newton Tracker will upload your data automatically to the cloud and you will get a confirmation message.

**NOTE:** If your data doesn't upload to the cloud (for example, because you don't have a cell phone signal where you end of your ride), you'll get a message saying that data hasn't been uploaded. **DON'T WORRY:** You can upload your data at any time later by tapping the “MyRides” button, tapping the ride you wish to upload, then tapping the “Isaac” button.

NOTE: It's OK if you upload the same Newton Tracker data more than once

## MERGING NEWTON TRACKER INFORMATION IN ISAAC

- Attach your Newton to your computer and download your ride file with Isaac
- Isaac will automatically merge your Newton Tracker GPS data from your cloud account.
- Save your ride file; GPS data will be saved with it!

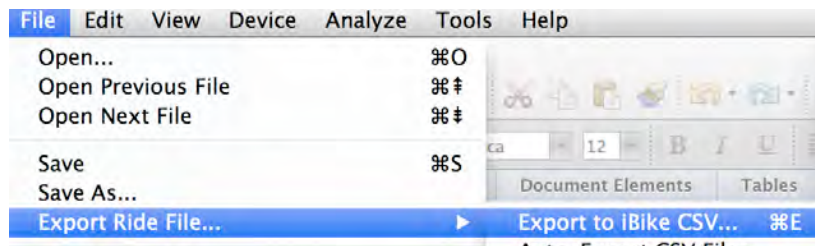
## VIEWING YOUR GPS DATA IN GOOGLE EARTH

In the main window of Isaac you'll see the Google Earth (GE) icon turn blue, indicating that GPS data is available. Click the Google Earth icon to see your GPS data. Select "Send to Google Earth"

In a few seconds your track will appear in Google Earth

## EXPORTING YOUR DATA FOR STRAVA

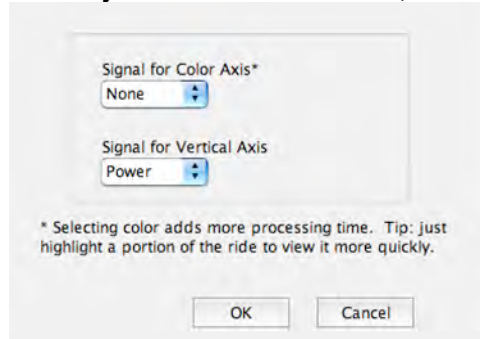
In Isaac, use the File/Export Ride File...Export to iBike CSV... command:



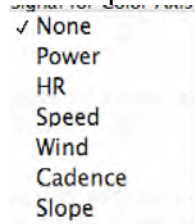
Isaac will create a csv ride file that can be exported into Strava.

## COOL FEATURES

- 1) In Isaac, if you highlight a portion of your ride in the main window, when you click the GE icon, you'll see exactly where that portion of the ride was located on your route
- 2) When you click the GE icon, a dialog box will appear:

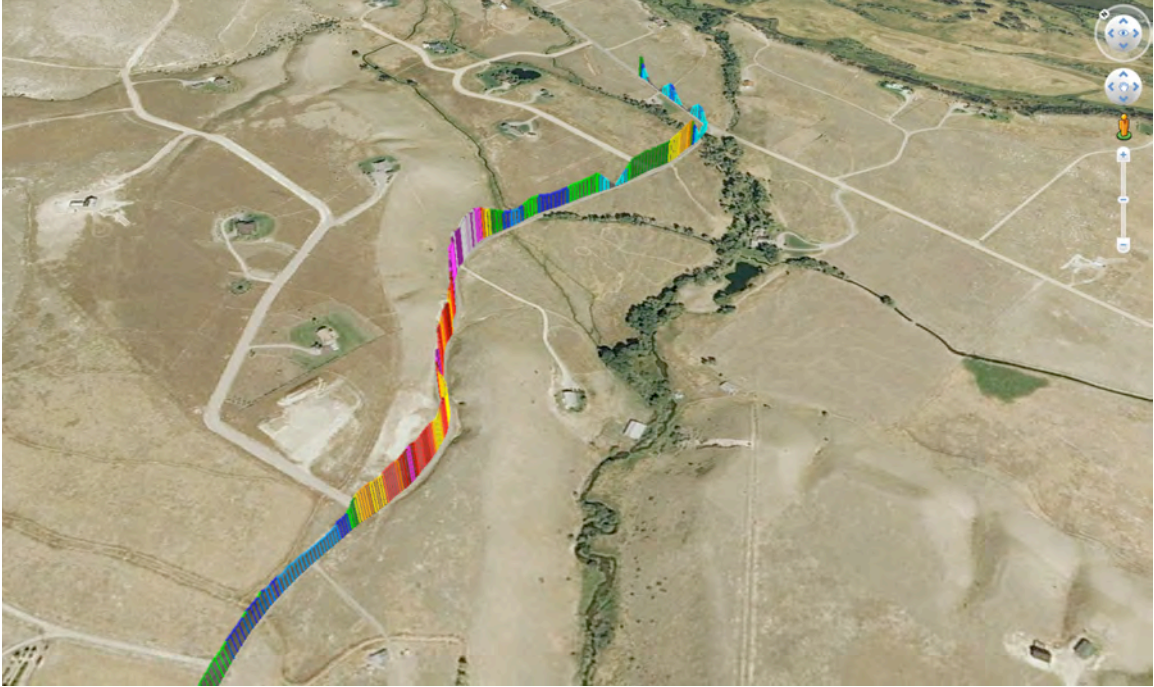


This dialog box allows you to choose the information you display on your GE map. You can select any of the following:

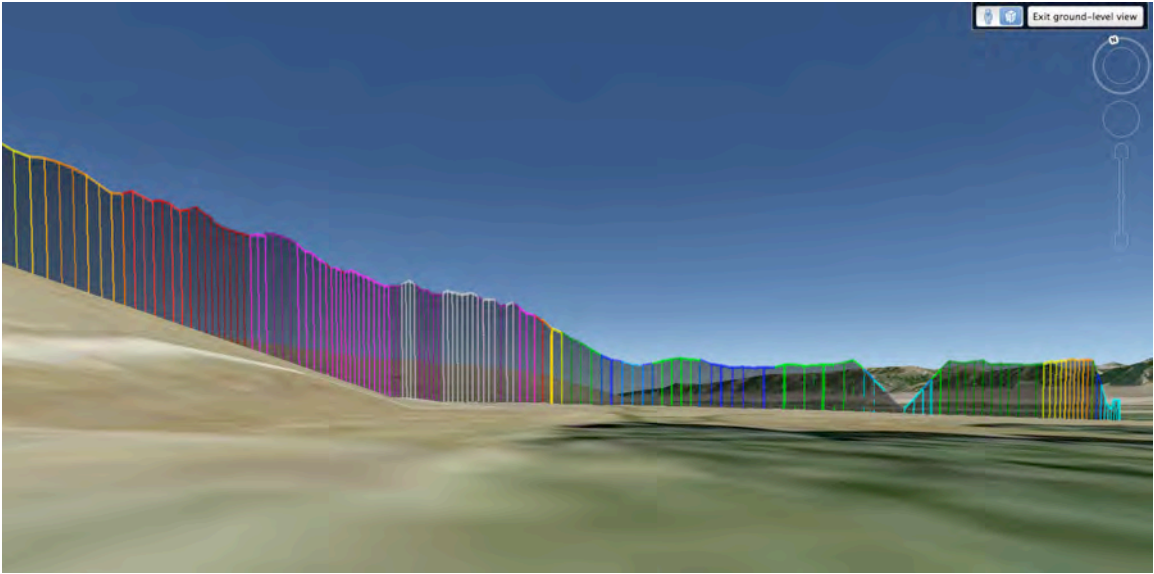


Try playing with it; you can get some pretty amazing insights into your cycling!

- 3) Also try the "street view" feature. You'll get a whole new perspective on your riding!



**“NORMAL” GOOGLE EARTH VIEW**



**“STREET VIEW” OF CLIMB; POWER AND POWER BANDS SHOWN IN THIS VIEW**

## SUPPORT



- Join the large community of iBike Newton enthusiasts at [ibikeforum.com](http://ibikeforum.com)
- Learn about power meter usage, training and racing at [ibikeblog.net](http://ibikeblog.net)
- And make sure to follow us on Facebook and Twitter:

<https://www.facebook.com/iBikePowerMeters>

<https://twitter.com/iBikepower>

**Still have questions? Email us at [technicalsupport@velocomp.com](mailto:technicalsupport@velocomp.com) We'll get back to you quickly!**