

Transform your iPhone or  
iPod touch into

# *iBike Dash*<sup>TM</sup>

The Ultimate Cycling Dashboard



**The revolutionary iBike Dash makes use of the full computer functionality of your iPhone or iPod touch to deliver a truly amazing cycling dashboard at your fingertips – a virtual co-pilot, navigator, and black box all in one.**

iBike Dash unites your iPhone 4, 3GS/3G or iPod touch (generations 1, 2, 3) with the Phone Booth™ and iBike® app to create a truly transformational device.

Just attach the “smart case” to your bicycle, secure your iPhone or iPod touch into the smart case and start the iBike app. The smart case houses patented electronics that interact with your iPhone or iPod touch to send cycling signals to the iBike app. Through the iBike app, that information is translated into on-screen viewable data -- an astounding display that completely reinvents the cycling experience.

**All of the iBike elements below work together to transform your iPhone or iPod touch into the iBike Dash.**

**Fully Enclosed Smart Case & Metal Mount**

***Rugged, Light-weight, Weather-Resistant***

This case is ready for the roads and the unexpected challenges that come with them! The lightweight, weather-resistant case is on and off your bike in a snap. It mounts easily and securely over your bike stem or handle bar to provide a rugged-tough protective device that delivers both water and shock protection. And because we know some cyclists just never seem to stop riding, we've made it easy to store a spare battery right in the smart case.



**Choose your App**



**iBike® Coach App**

***Start your Training***

The ultimate in app simplicity, measure speed, distance, time, calories, elevation, and more. And then get immediate feedback as you see your bike ride information displayed in ways never before possible, even graphically! But best of all – you get to choose. With an iPhone, you'll also get GPS maps right on your bike. Available in 9 different languages.



**iBike® App**

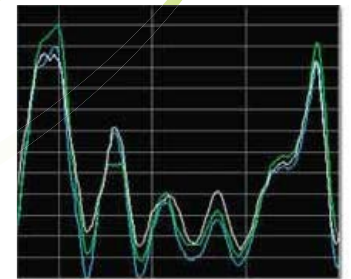
***Take it to the Next Level***

The ultimate way to customize your cycling computer, the iBike app takes information from the smart case and translates it directly onto the screen of your iPhone or iPod touch. See for yourself! Download it free from the app store and check out the demo ride file that shows you how iBike has completely re-imagined the cycling experience.

**iBike Ride Analysis Software**

***A Rich Set of Analytical Tools***

Download your ride data directly from your iBike Dash\*! iBike software provides a rich set of analytical tools that gives the information you need to evaluate your ride, track your fitness, enhance your performance and more. You can even see your actual bike route on a map or satellite view.\*



\*with iPhone or iPod touch (with wi fi)

- iPhone and iPod touch not included

# iBike Dash™

Whether you're riding with the iBike Dash CC cycling computer or the iBike Dash+Power power meter your experience will include:



## Fully Customizable Touch Screen Control

You choose the information you want to see and how you want to see it. The customizable iBike Dash display allows you to combine numbers, maps, graphs, and colors to personalize your iBike Dash screens.

Want to look at your ride from another perspective? iBike Dash lets you flip back and forth between screens and important applications while you ride. Navigation is fast and easy and screens are easy to read at a glance so you can track your progress and keep your attention on the road.

## Wireless Measurement

iBike Dash utilizes ANT+ wireless technology and sensors to provide seamless collection of your ride data, including speed and distance, and optional heart rate, and cadence. Already own an ANT+ sensor? The iBike Dash can read that too!

## Plug & Play

iBike Dash is remarkably simple to set up. Advances in electronics have done away with the need for calibration and there are no more instruction manuals needed! Easy-to-follow, on-screen directions walk you through the set up process screen by screen. You'll be ready to ride in no time! Looking for more information or visual guidance? The YouTube Set Up Video Guides, accessible directly from the iBike app set up screens, will show you how.\*

## Proven Performance

The iBike Dash may be a new product but its technology is proven. We've built upon the patented electronics and proprietary firmware developed for the original iBike in 2005 and made it even better.

New generation sensors and a faster microprocessor circuitry deliver better measurement accuracy, increased setup simplicity, and improved temperature performance. A complete updating of iBike Dash firmware capitalizes on five years of real-world experience in creating, fine-tuning, and battle-hardening the features that cyclists want: simple setup, bullet-proof reliability, and intuitive operation -- equipping you with one amazingly powerful computer.

## Automatic App Updates

When there's something new, your iBike Dash will be the first to know. Your iBike Dash is pre-programmed to keep you up to speed on all of the latest enhancements and new features for the iBike Dash whenever you update the app.

As experienced pioneers in the cycling industry we know that there are always on-going technological advancements and we don't want you to miss out. We're committed to updating, upgrading, and inventing new iBike Dash features and other operational improvements so your iBike Dash CC and iBike Dash+Power will stay up to date.

\*with iPhone or iPod touch (with wi fi)



# iBike Dash<sup>TM</sup> CC

Cycling Computer

The Cycling Computer - Reinvented.



## Wireless Cycling Computer Measurement

The information you want to see, the way you want to see it with user-selectable screen configurations including:

- **Cumulative readings:**
  - Trip distance
  - Trip time
  - Odometer
  - Total hours logged
  - Total distance logged
- **Current, average, and maximum:**
  - Speed
  - Cadence+
  - Temperature
  - Heart rate+
- **Date and time**
- **Trip data auto start/stop**
- **Lap timer**
- **English and Metric units**
- **Compatible with all ANT+ sensors**
- **Optional ability to read ANT+ DFPM power sensors**

## Real-Time GPS Maps And Map Routes\*

Need to find out where you are, where you're going, or maybe where you can stop for lunch? Just swipe the screen and the map appears.\* And when you download your ride, you can see your actual bike route on a map or satellite view\*.

Weather can change during the course of a ride and no rider wants to get caught unprepared. Your weather apps are accessible any time you stop – without losing any ride data.



## Superior Rain & Shock Protection Meets Touch Screen Control

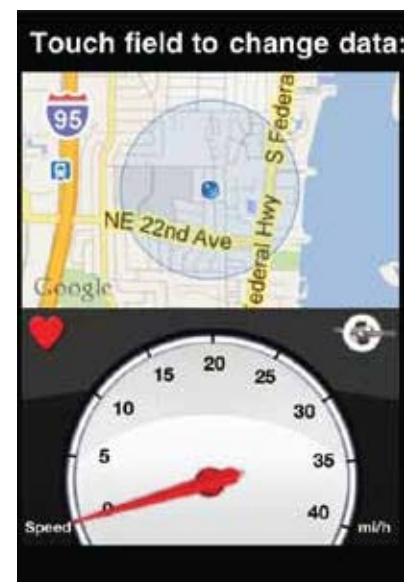
- Large, full-color, easy-to-read backlit screen provides graphical, animated and numerical information
- Rugged Phone Booth<sup>TM</sup> completely encloses your iPhone/iPod touch for superior rain and shock protection
- Touch screen navigation gets you to the info you want – **fast**

## Always On<sup>TM</sup> Data Recording

- Some calls just can't wait but taking a call can mean lost data. With the iBike Dash CC you don't have to choose. Go ahead and take the call your iBike Dash CC is "Always On" recording data.
- Place/receive phone calls while iBike app is running\* without losing any data
  - Bluetooth headset compatible\* (requires Bluetooth headset)

## Easy Set-Up, Data Downloads & Analysis

- On-screen, guided setup instructions
- iBike<sup>®</sup> software for Mac and PC
- On-the-road, instant-send function for ride files \*\*\*\*
- Multi-bike profile storage



## Impressive Storage

- 6,000,000 miles of ride data storage at one second intervals\*\*\*
- Exclusive "Continuous Record"™ iBike Dash CC electronics record ride data.

## Extended Battery Life

Optional lightweight, rechargeable spare battery that fits perfectly in the smart case.

- Carry extra spare batteries for rides of 8 hours or more.
- Change batteries without losing any valuable ride data.



## Pre-Programmed Fitness Tests & Workouts

On-screen graphs and visuals capture your results, track progress and on target.

It's like having a personal trainer on every ride. Includes:

- Heart rate based, pre-programmed fitness test+
- Graphical and animated HR-based zone interval workouts+



## Includes:

- Smart Case Mount (your choice of steer tube or handle bar mount)
- iBike app or iBike Coach app (downloadable from iTunes Store)
- iBike software for PC or Mac (downloadable from [www.iBikeSports.com](http://www.iBikeSports.com) website)
- Wireless iBike ANT+ speed sensor
- Spoke magnet
- Printed Instructions Summary and On screen instructions displayed in iBike app
- Detailed iBike Dash CC instructions supplements (included with iBike software)
- One year warranty

## Optional:

- Fitness Pack upgrade
- Spare battery and base charging station (120V/240V)
- 12V charging adapter for automobiles
- Spare battery
- Direct Force Power Meter sensor key

## OPTIONAL iBike Dash FITNESS UPGRADE

### *Increase Your Fitness Level and Ride Time*

When you add cadence and heart rate measurement to your cycling data, you'll open a whole world of new training possibilities to get you fit, fast! And with a rechargeable battery and charger nothing will stand in your way.

The optional iBike Dash Fitness Upgrade includes:

- iBike Rechargeable Battery
- U.S. Fitting Battery Charger
- Combined Speed/Cadence Sensor
- Heart Rate Strap

+ Optional cadence or heart rate sensors required

\* requires iPhone

\*\* with optional spare battery.

\*\*\* depends on iPhone/iPod touch memory capacity

\*\*\*\* Send ride files directly from your bike. Requires 3G/Edge network or WiFi access

# iBike Dash™ + Power

Power to the People

## Power Meter



### Wireless Power Meter and Cycling Computer Measurement For Use Inside and Out

The information you want to see, the way you want to see it with user-selectable screen configurations including:

- **Current, average, and maximum:**
  - Power (watts both numeric and zone)
  - Wind speed
  - Hill Slope
  - Elevation
  - Temperature
  - Bike Speed
  - Cadence
  - Heart rate (both numeric and zone)
- **Cumulative readings:**
  - Trip distance
  - Trip time
  - Odometer
  - Total hours logged
  - Total distance logged
- **Color-based wattage and HR zone display**
- **Date and time**
- **English and Metric units**
- **Trip data auto start/stop**
- **Lap timer**
- **Compatible with all ANT+ sensors**
- **Ability to read ANT+ DFPM power sensors**
- **Use it indoors and out with Indoor Trainer functionality (included).**

### Real-Time GPS Maps And Map Routes\*

Need to find out where you are, where you're going, or maybe where you can stop for lunch? Just touch the map icon on the top right corner of the app screen and the map screen you've set up appears.\* And when you download your ride, you can see your actual bike route on a map or satellite view\*.



Weather can change during the course of a ride and no rider wants to get caught unprepared. Your weather apps are accessible any time you stop – without losing any ride data.

### Cutting Edge Technology

- Advanced iBike sensors improve wattage measurement accuracy and temperature stability
- Latest ANT+ sensors included: combined speed/cadence sensor, improved HR strap
- Compatible with all ANT+ sensors, including ANT+ DFPM
- Easy mid-ride spare battery changes extend ride time length, without losing data
- New redesigned wind port improves wind reading performance in cross winds

### Always On™ Data Recording

Some calls just can't wait but taking a call can mean lost data. Go ahead and take the call your iBike Dash is still recording data.

- Place/receive phone calls while iBike app is running\* without losing any data
- Bluetooth headset compatible\* (requires Bluetooth headset)

### Impressive Storage

- 6,000,000 miles of data storage at one second intervals\*\*\*



## Easy Set-Up, Data Downloads & Analysis

- On-screen, guided setup instructions make installation easy and fast
- New iBike Dash mounting system (handlebar or steer tube) simplifies setup and makes the smart case mounting secure and removal easy
- Own more than one bike? Multi-bike profile storage puts start up one click away
- iBike® app updates available from iTunes Store
- iBike® software available for Mac and PC
- Download and view all ride data; you can even see your actual bike route on a map or satellite view\*
- Instant-send function for ride files \*\*
- Compatible with Training Peaks WKO+

## Extended Battery Life

Keep your iBike Dash running for hours using the optional lightweight, rechargeable spare battery that fits perfectly in the smart case.

- Carry extra spare batteries for rides of 8 hours or more
- Change batteries without losing any valuable ride data

## Pre-Programmed Fitness Tests & Interval Training

On-screen graphs and visuals capture your results, track progress and let you know when you're on and off target. Use the pre-programmed workouts or upload your own. It's like having a personal trainer on every ride.

Includes:

- Fitness Test (both power FTP and HR measurement)
- Graphical and animated power-based interval workouts



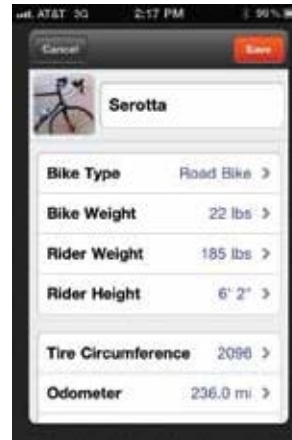
## OPTIONAL iBike Dash FITNESS UPGRADE

### *Increase Your Fitness Level and Ride Time*

When you add cadence and heart rate measurement to your cycling data, you'll open a whole world of new training possibilities to get you fit, fast! And with a rechargeable battery and charger nothing will stand in your way.

The optional iBike Dash Fitness Upgrade includes:

- iBike Rechargeable Battery
- U.S. Fitting Battery Charger (120V-240V)
- Combined Speed/Cadence Sensor
- Heart Rate Strap



## Includes:

- Smart Case
- Smart Case Mount (your choice of steer tube or handle bar mount)
- Spare battery and battery charger (120v/240V)
- iBike app (download from iTunes Store)
- iBike software for PC or Mac (download from [www.iBikeSports.com](http://www.iBikeSports.com) website)
- Wireless iBike ANT+ combined speed/cadence sensor
- Wireless iBike HR Strap
- Spoke and cadence magnet
- Printed Instructions Summary
- On-screen instructions displayed in app
- Detailed iBike Dash instructions supplements (included with iBike software)
- One year warranty

## Optional:

- Second Bike Combo: steer tube mount, combined speed/cadence sensor
- Extra spare battery and charging station (120V/240V)
- 12V charging adapter for automobiles
- Spare battery
- WKO 3.0 software
- Fitness Pack

\* requires iPhone

\*\* with optional spare battery.

\*\*\* depends on iPhone/iPod touch memory capacity

\*\*\*\* Send ride files directly from your bike.

Requires 3G/Edge network or WiFi access

## IBIKE DASH SPECS

- Size: 5 ¼" x 2 ¾" x 1 ¾"
- Bike computer weight: 87 grams (does not include iPhone/iPod Touch)
- Spare Battery Type: Rechargeable Li-Ion, 1 ¾" x 1 ¼" x ¼", 20 grams
- Continuous operating time: up to 5 hours or more when used with optional spare battery; continuous operation can be extended beyond 5 hours by changing spare battery during ride
- Spare Battery Charging Time: 3 hours
- Connection Type: WiFi or carrier data network (3G or Edge)
- Memory size: uses iPhone/iPod touch internal memory for essentially unlimited ride file lengths and numbers of ride files
- Windows System Requirements: Windows XP/Vista/Windows 7
- Macintosh System Requirements: Intel Mac running OSX 10.5+



[www.iBikeDash.com](http://www.iBikeDash.com)